



# WINTER

CATALOGUE 2021





# CONTENTS

GENUINE ENGINES .....	4
REDXTEND WARRANTY .....	5
THE NEW GENUINE LUBRICANTS PORTFOLIO .....	6 - 9
HIGH PERFORMANCE PAINTS .....	10 - 11
MAINTENANCE .....	12 - 13

SEED FLOW LUBRICANTS .....	13
PRECISION FARMING.....	14 - 17
RAM MOUNTS .....	18
ROLLER WHEEL KITS .....	19
TRACKS .....	20 - 21



CAB PARTS .....	22
BATTERIES .....	23
REMAN PARTS.....	24 - 25
TOOLS .....	26 - 27
GENUINE FILTERS .....	28 - 29
ELECTRICAL ACCESSORIES.....	30

LIGHTING .....	31
RADIO & ANTENNAS .....	32
FIRE EXTINGUISHERS.....	33
FRIDGES .....	34
TOYS.....	35 - 37
MERCHANDISE .....	38 - 39

# GENUINE ENGINES

All genuine engines come with a one-year warranty!

The FPT family of engines are robustly designed for a wide range of agricultural applications. Genuine engines have been vigorously tested and improved to exceed growing customers' requirements in performance and efficiency, while complying with stricter emission regulations.

Part Number	Application
5801509339	STEIGER 450, 500
5801507161	QUADTRAC 600
5801425055	PUMA 170, 185
5801793848	MAGNUM 280, 310, 340, 380
5801507162	QUADTRAC 550



For the full range of genuine engines, contact your Case IH Dealer



# GREAT BENEFITS

AVAILABLE ACROSS CASE IH TRACTORS, COMBINES, BALERS, SELF-PROPELLED WINDROWERS AND PATRIOT SPRAYERS, REDXTEND PROVIDES YOU WITH OPTIONS TO EXTEND THE STANDARD PRODUCT WARRANTY PROVIDED. YOU SELECT THE PLAN WHICH BEST MEETS YOUR NEEDS.

**REDXTEND**  
WARRANTY

## QUALITY REPAIRS

If your machine requires some attention, all eligible repairs will be carried out using genuine Case IH parts and will be fitted by our dedicated, factory-trained technicians.

## TRANSFERABLE PROTECTION

RedXtend plans remain with the machine and are transferred to the new owner if sold during the protection period\*. This provides prospective owners of your Case IH equipment with the peace of mind that the equipment has been properly cared for under your ownership.

Scan the QR code  
to access the full  
RedXtend brochure.



## FINANCING

For greater convenience and flexibility, RedXtend warranty can be financed as part of your Case IH equipment purchase. Speak to your dealer about developing a complete finance solution\*\*.

## FLEXIBILITY OF PLANS

RedXtend is designed with the care and maintenance of your Case IH in mind, allowing you to choose a protection plan for your specific needs.

\*T&C's apply. Contact your local Case IH Dealer for details.

\*\*RedXtend plans financed through CNH Industrial Capital Australia Pty Limited are required to be financed with the new machine purchase at time of sale.



# NEW GENUINE LUBRICANTS PORTFOLIO: DESIGNED FOR SUCCESS

The new comprehensive genuine lubricants portfolio offers the latest original equipment manufacturer (OEM) engine oils, next generation hydraulic transmission oil, hydraulic oil, coolant, grease, and specialty fluids.

Only the OEM products available through this portfolio are engineering approved and recommended for Case IH equipment.



A wide range of genuine quality lubricants  
you can rely on.



# Tested, vetted and ready to revolutionise the industry

Case IH has undertaken rigorous testing of our products to push the limits of performance under pressure.

Working closely with our industry leading blending partner, we've developed a complete lubricants portfolio engineered specifically for Case IH equipment. No matter the job, this comprehensive range of lubricants has it covered.

**While these products are cross compatible, only our OEM lubricants are:**

- built specifically for Case IH equipment
- tested and fully approved to meet or exceed API and CNH Industrial Material Standards (MAT)
- approved for Case IH equipment limited warranties.

The full suite of options in this new portfolio includes industry-leading advancements in engine oils, hydraulic transmission oil, coolant, grease and specialty fluids.



# QUALITY THAT YOU EXPECT

## ENGINE OIL

As a safeguard against premature wear, our genuine No.1 Engine Oils have been specifically engineered to new, next generation MAT 3571, 3572, 3622 specifications. Our oils have been extensively tested to provide maximum protection in oxidation and aeration control, shear stability and proven performance life for the heavy-duty, high-temperature operation of agricultural and other off-road diesel-powered equipment.

### No.1 Engine Oil™ SAE 15W-40 API CK-4 MAT 3572



73394619 73394620 73394536 73394537

### No.1 Engine Oil™ SAE 10W-40 API CK-4 MAT 3571



73394542 73394624 73394541

### No.1 Engine Oil™ Super SAE 15W-40 API CI-4 MAT 3622



73394622 73394623 73394533 73394534



## HY-TRAN PREMIUM

With advances in technology, Case IH remains at the forefront with the newly improved Hy-Tran Premium Hydraulic Transmission Oil. This oil is designed to keep tractor transmissions, axles and hydraulic systems free from deposits while inhibiting wear, corrosion, sludge and foaming.

### Hy-Tran® Hydraulic Transmission Oil - Premium



73394639 73394634 73394521 73394522



## UNIVERSAL TRANSMISSION

Premium Hydraulic Transmission Oil is designed for use in transmissions, hydraulic systems, oil immersed breaks and other ancillary systems fitted to agricultural tractors and off-road equipment. Suitable for use in most modern equipment. Transmission Oil – Premium is our latest improvement to the Multi-G formula.

### Universal Transmission Oil - Premium SAE 10W-30



73323224 73394644 73394527 73323225

(Available July 2021)

(Available July 2021)





## EXTENDED LIFE OAT COOLANT

This long service life coolant/antifreeze is based exclusively on a synergistic combination of Organic Additive Technology (OAT), providing excellent overall corrosion protection. Suitable for all heavy-/light-duty diesel, natural gas and gasoline engines, this formulation is approved by our engineers under the new next-generation MAT 3724 specifications and provides superior high temperature protection in extreme conditions. It protects cooling system metals including brass, copper, solder, steel and cast iron against rust, corrosion, and deterioration, and also fights against deposit build up and cylinder liner cavitation.

### OAT Extended Life Coolant/Antifreeze - Premix MAT 3724



73394595 73394604 73394594



## NEXPRO HD ENGINE COOLANT PREMIX (OAT)

NEXPRO HD Engine Coolant Premix is a universal, long-life engine coolant/antifreeze designed for use in agricultural machinery and on-highway vehicles. This is a ready-to use (RTU) product, thereby not requiring any further dilution.

NEXPRO HD Engine Coolant Premix is formulated to provide:

- extended life; 4 years/100,000 kms/12,000 hours
- compatibility with other OAT and conventional coolants.

### NEXPRO HD Engine Coolant Premix (OAT) ASTM D3306, D6210



73394732 73394733



## GREASE

Case IH grease is formulated with numerous additives to enhance and maintain consistent performance against high temperatures and extreme pressure.

This includes:

- antioxidants
- anti-wear
- extreme pressure additives
- friction modifiers
- dyes
- anti-weld and solid



### Multi-Purpose 251H EP Grease Anti-Wear / NLGI 2 MAT 3555-A



73394600 73394601



# HIGH PERFORMANCE PAINTS

Colours to stand the test of time!







Name	Aerosol	1 Litre	4 Litre
MS2 Power Red	<b>B17670N</b>	<b>B17671LF</b>	<b>B17672LF</b>
MS3 Red 1998	<b>B17566N</b>	<b>B17564</b>	<b>B17562</b>
CNHi Dark Grey	<b>B96104</b>	<b>B96105</b>	<b>B96106</b>
CASE MS19 Silver	<b>B17567N</b>	<b>B17565</b>	<b>B17563</b>
Semi-Gloss Black	<b>73323148</b>	<b>73323169</b>	<b>73323190</b>
CASE MS 45 Non-Glare Black	<b>990121N</b>	<b>1132129R1</b>	<b>B90886</b>
CASE MS 42 Power Tan 4	<b>B17660N</b>	<b>B17661</b>	<b>B17662</b>
CASE MS 43 R/Oxide Primer	<b>1131655R1</b>	<b>991078R1</b>	<b>B90892</b>
CASE MS 7 Power White	<b>B17655N</b>	<b>B17656</b>	<b>B17657</b>
CASE MS 50 Gloss Black	<b>B17680N</b>	<b>B17681</b>	<b>B17682</b>
IH 2150 Red	<b>991012N</b>	<b>73323186</b>	<b>73323208</b>
Grey Primer	<b>B91253</b>	<b>B91254</b>	<b>B91255</b>
Buff Primer	<b>73323150</b>	<b>73323171</b>	<b>73323191</b>
Steiger Green	<b>73322109</b>	<b>73323184</b>	<b>73323206</b>

MS2 Power Red	MS3 Red 1998	CNHi Dark Grey	CASE MS19 Silver	Semi-Gloss Black
CASE MS 45 Non-Glare Black	CASE MS 42 Power Tan 4	CASE MS 43 R/Oxide Primer	CASE MS 7 Power White	CASE MS 50 Gloss Black
IH 2150 Red	Grey Primer	Buff Primer	Steiger Green	

# MAINTENANCE

Sow the benefits in 2021.

## CABLE TIES - PACKS

PART NUMBER	DESCRIPTION
<b>TDCTB6512BK</b>	Cable ties black, 12 x 580mm, pack qty: 300
<b>TDCTCP10</b>	Contains 1000 popular black cable ties in assorted sizes
<b>TDCTP07</b>	Cable ties assorted colours, 2.5 x 100mm, 2.5 x 150mm, pack qty: 500
<b>TDCTP25</b>	Cable ties assorted colours, 2.5 x 100mm, 4.8 x 200mm, 4.8 x 300mm, pack qty: 1000
<b>TDCTP26</b>	Cable ties assorted colours, 4.8 x 300mm, pack qty: 300

## BULK HOSE CLAMP PACKS INCLUDES PLASTIC CARRY BOX!



### TDMP125

- Multi-purpose stainless steel part
- Solid band clamp
- Covers ranges: 11 - 70mm
- 125 clamps

## DOUBLE EAR CLAMP PACK 300 Clamps

### TDTEC300

- Suitable for use on compressed air, gas and liquid lines
- All popular sizes
- 300 hose clamps with pinching plier



## HOSE CLAMP PACK 82 Clamps

### TDCVP82

- General purpose clamp
- Covers ranges: 6 - 51mm
- 82 clamps
- Perforated stainless steel part



## HOSE CLAMP PACK 82 Clamps

### TDCVP82SS

- Corrosion resistant
- Covers ranges: 6 - 51mm
- 82 clamps
- Perforated full stainless steel



## RUBBER LINED CLAMP PACK 90 Clamps

### TDTRL90K

- For pipes, cables, hoses, etc
- Removable rubber lining
- Covers sizes 3.2 - 17.5mm
- Contains 90 rubber lined clamps



## CABLE TIE MERCHANDISER

### TDCTM100

- Complete with free-standing display unit
- Minimal space requirements
- Complete cable tie solution



**TRIDON** 



# MAINTENANCE

Be prepared with these handy items.

## SEED FLOW LUBRICANTS

### Why is a seed lubricant necessary?

Case IH Seed Flow Lubricants are comprised of either 100% graphite or a 50/50 talc graphite blend. Graphite is a dry lubricant used to loosen the moving components inside the seed meter, reducing friction and wear. Talc works as a drying agent by coating the seeds to minimise moisture absorption – especially important in air planters. Plus, graphite and talc have anti-static characteristics that help prevent static electricity from developing on plastic metering disks.

## BENEFITS THAT PRODUCERS CAN SEE IN THE FIELD AND THE SHED

Seed Flow Lubricants:

- reduces seed meter component wear
- increases seed delivery consistency by lubricating the seed tank, inductor, hoppers, delivery lines and seed tube
- provides optimum seed drying capabilities and controls static electricity to minimise clumping and bridging.


PART NUMBER	DESCRIPTION	4 Litre
407486R1	453 g, 100% graphite, fine particle size	Available now
73340733	3.63 kg, 100% graphite, fine particle size	Available on backorder only
73340370	453 g, 50/50 talc graphite blend, fine particle size	Available on backorder only
73340734	3.63 kg, 50/50 talc graphite blend, fine particle size	Available now



## HOSES

PART NUMBER	HOSE ID	LENGTH	COLOUR	DESCRIPTION
87410257	7/8" / 22.2mm	100ft / 30.5m	Black	Poly EVA
4726	1" / 25.4mm	100ft / 30.5m	White	Poly EVA
86993485	1" / 25.4mm	100ft / 30.5m	Black	PVC
86992913	1" / 25.4mm	100ft / 30.5m	Black	Poly EVA
412786A1	1" / 31.75mm	100ft / 30.5m	Clear	Clear PVC
86992286	2.5" / 63.5mm	100ft / 30.5m	Black	PVC
3680	2.5" / 63.5mm	100ft / 30.5m	Clear	Clear PVC with white





As the cost of crop inputs continue to rise, the benefits of precision farming is evident. The AFS Pro 700 is the one control centre you need in your cab to be more productive.

With a 10.4-inch colour touchscreen and up to six run screens on a single monitor, you'll benefit from added capabilities with minimal complexity. Use it to fine-tune options such as remote valve timers and flow control, auto PTO, engine speed settings, wheel slip alarm, calibrations and implement settings, and other key machine functions.

## AFS PRO 700

One control centre for all your precision farming needs.





Installation of a ISOBUS Electronic Control Unit (ECU) allows product control on many implements. By using the AEF Certified Pro 700 display, this will minimise the need for an additional display or controller in the cab. ISOBUS ECU will allow standard rate control functionality through the VT/UT interface with the operation of your implement being controlled simply by navigating and pressing on the display. If you add the task controller unlock to your Pro 700, it will open your options with the ability to automatically control your rate and sections, variable rate apply your products and record your as-applied mapping as you travel along the field.

**Note:** This is all subject to your implement capabilities.

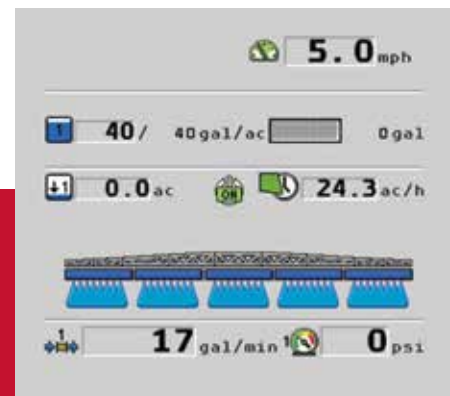
## FEATURES AND SPECIFICATIONS

- Minimise input costs by utilising automatic section control.
- Intuitive user interface.
- Ability to alter your rate manually or automatically by using VRA technology.
- Increase implement versatility by making it ISOBUS compatible.
- Use your existing Pro 700 or other ISOBUS compliant displays.
- Kits to suit many existing implements in the market.
- Virtual headland capability when paired with the Pro 700.



# ISOBUS ECU

For advanced implement control.



## MANAGE DATA MAPS

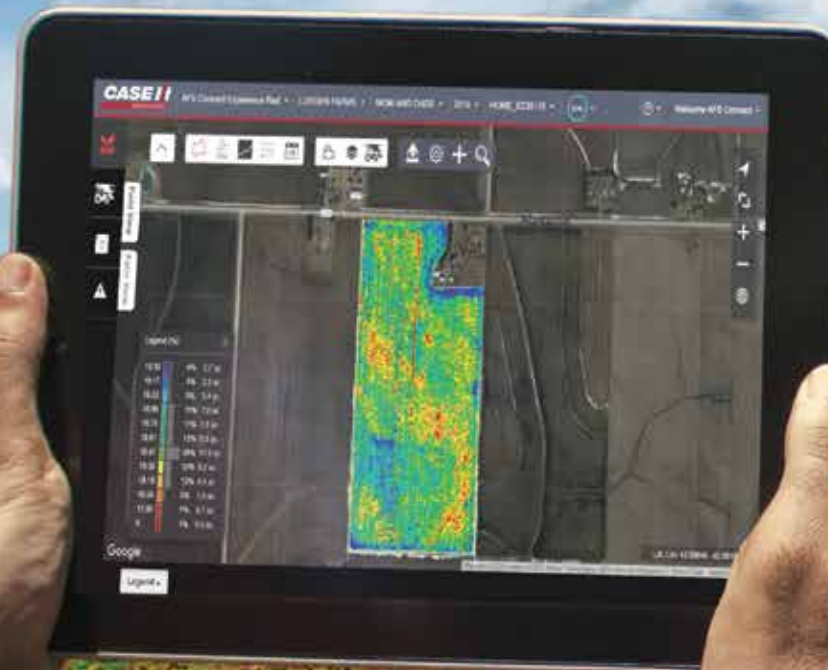
- Yield maps
- Guidance line patterns
- As-applied maps
- Seeding and fertiliser prescriptions

## WIRELESSLY TRANSFER DATA

- From AFS Connect to your trusted advisors or preferred farm management software
- Make the most of data captured by your machinery
- Drive management decisions based off data analysis

## CONTROL DATA ACCESS

- Control data access generated by your equipment
- Control each piece of data, such as which field or operational data is sent to partners or farm management software



# AFS CONNECT

Connect and securely share your farm data with trusted partners, anywhere, anytime.



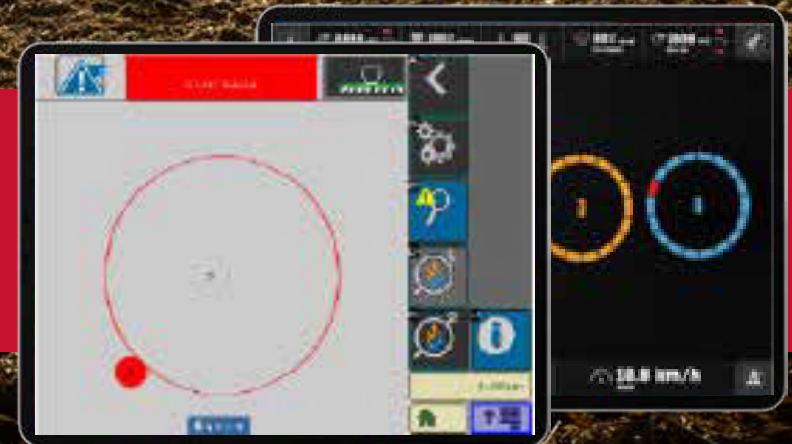
Gain full insight into your seeding application by adding an industry-leading blockage sensing kit to your air-seeder.

- Support for up to 240 seed/fertiliser blockage sensors.
- Dust compensated optical technology allows for minimal cleaning during a season.
- Can be configured as a standalone system via iPad and/or ISOBUS system to integrate into your tractors display.
- Will produce seed count and row-by-row distribution bar chart display when paired with an iPad.
- Customisable run-time layout using the iPad interface.
- Blackeye sensor has integrated status LED providing instant feedback for troubleshooting.



## BLOCKAGE MONITORING

Precision seed sensing technology.



# RAM MOUNTS

Leader in mobile mounting solutions.

**Premium design** - quick installation, infinite adjustability and dampening for the most demanding environments.

**Customisable** - various solutions to fit your specific needs.

**Quality material** – mounting systems use powder-coated marine grade aluminium, lightweight high-strength composites and stainless steel hardware.

**Reputation** - RAM® Mounts solutions have been proven in agricultural environments for years.

RAM® Mounts manufactures rugged and versatile mounting systems for precision farming displays, cameras, tablets, and other mobile devices that can be fitted on a wide range of vehicles and agricultural machinery.

With tractors, combines and other farm machinery now having up to five or more displays in a single cab, it can be difficult to mount monitors in a usable position. With the flexibility of the RAM® Mounts you can now mount all hardware with minimum vibration or movement.

PART NUMBER	DESCRIPTION
47762155	Ram® X-Grip® holder for 9" - 10" tablets. Compatible with ram-22U ball adapter
47762521	Kit, tablet mount assy
47762523	Kit, phone mount assy
87284257	Ram double socket arm C ball
87284258	Base plate 1.5" (3.81 cm) ball AMPS round
87284259	U-Bolt base 0.75" (1.91 cm) to 1.25" (3.18 cm) diameter
87386396	Color display arm
87386398	Sq mount ram
87645094	Arm assy C size
48165853	Suction mount base
ZAEBARTABLETMNT	Universal tablet mount
ZAEBARPHONEMNT	Universal smartphone mount



ZAEBARTABLETMNT



ZAEBARPHONEMNT

## UNIVERSAL MOUNT ADVANTAGES

- Universal for a variety of devices
- Easy to install
- Bar mount provides customisable installation
- Protect your device during off-road work days

*\* iPhone and iPad are not included*



47762155



47762521



47762523



87284257



87284258



87284259



87386396



87386398



87645094



48165853



# REMAN ROLLER WHEEL KITS

REMAN roller wheel kits are now available. These kits include everything you need to replace a roller wheel and offer a price advantage compared to buying each component separately.



## KITS INCLUDE:

- roller wheel
- cup, seal
- seal assembly
- 2 bearing cups
- 2 taper roller bearings
- bearing retainer and bolt
- clear cap with o-ring, plug and snap ring.



48029054R  
QUADTRAC



48029056R  
MAGNUM ROWTRAC, QUADTRAC ROWTRAC

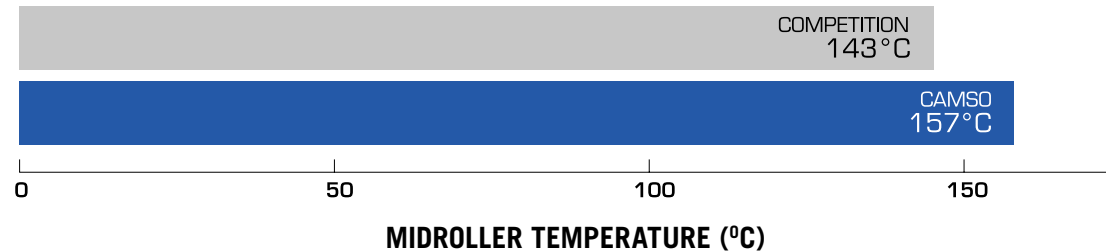
**Don't forget your oil! Review the latest operator's manual for information on oil quantity and type.**  
**Visit [www.mycnhstore.com](http://www.mycnhstore.com) to match Roller Wheel Kit to your Magnum or Quadtrac model tractor.**



# THE NEXT GENERATION OF ROADING TRACK

Get out in the field faster with the new Camso 4500 high-roading track for Case IH Rowtrac tractors. These Camso tracks allow you to travel up to 65 km per hour on narrow tracks.

## For Case IH Rowtrac™ Tractors **CAMSO RD 4500**



### TRACK TECHNICAL SPECIFICATIONS:

PART NUMBER	TRACK SERIES	PRODUCT FAMILY	TRACK WIDTH (in.)	TREADBARS				DRIVE LUGS	CARCASS		
				QTY	HEIGHT (in.)	TIP WIDTH (in.)	PITCH (in.)	QTY	PLIES	MAIN CABLE (mm)	THICKNESS (mm)
51417218	RD 4500	High-roading	16	88	1.8	3.2	6	44	4	5.4	35
51417219	RD 4500	High-roading	18	88	1.8	3.2	6	44	4	5.4	35
51444172	RD 4500	High-roading	21	88	1.8	3.2	6	44	4	5.4	35
51417221	RD 4500	High-roading	24	88	1.8	3.2	6	44	4	5.4	35
51417222	RD 4500	High-roading	30	88	1.8	3.2	6	44	4	5.4	35







**CAMSO OFFERS THE BROADEST RANGE OF TRACK WIDTH FOR  
CASE IH STEIGER AND MAGNUM ROWTRAC \*: 16,18, 21, 24 AND 30 INCH**

\*Magnum Rowtrac is available with 16 inch wide track.



# CAMSO RD 4500

Faster roading speeds, best-in-class performance, and durability.



## **Longest lasting carcass**

**No material displacement during the manufacturing and curing process means**

- Uniform tension distribution, eliminating downtime due to carcass tear

## **Four-ply carcass**

**New carcass specifically designed for high speed roading**

- Designed to endure higher internal temperatures during roading

## **High-roading tread bar**

**New tread bar designed for high-speed roading**

- Enhanced tread bar shape and advanced rubber compound allowing for faster speeds

## **Optimised drive lugs**

**Allows for maximum power transfer**

- Drive lug geometry designed specifically for Steiger and Magnum Rowtrac drive wheel



## **Faster roading speeds, best-in-class performance, and durability**

- Up to 50% faster than previous generation when travelling with implements.
- Reduced travel time on the road means up to a 16% increase in field productivity.
- Maximised uptime, in the field and on the road.



SHERCC6CHAL

# CAB PARTS

Genuine parts make all the difference.

Case IH is committed to optimising your performance. We've created an extensive range of genuine parts to fit your machine perfectly. Built to the highest standards, our genuine parts range will keep your machines in top condition today and in the long-term to maximise your investment.

## CABIN AIR FILTER

Work hard, breathe easy! Our air filters provide you with maximum comfort while you work, letting your engine perform at optimum performance in the field.

## SEAT COVERS AND FLOOR MATS

Protect your cab and improve your comfort while driving. Case IH genuine seat covers and floor mats look great and fit your machine perfectly.

## GLASS

Clear vision, safe operation. All genuine Case IH windows are made from either tempered or laminated glass, offering greater stress and impact-resistance, while providing more effective protection in the event of breakage.



## MAGNAPOWER™ PREMIUM HEAVY-DUTY

- Includes LifeGrid™ technology for consistent performance
- Large inter-cell connectors provide superior vibration protection
- Heavy-duty container for maximum durability
- Epoxy anchor bonding for improved strength



# MAGNA POWER BATTERIES

Made for Australia's toughest environments

Magna Power batteries are built to last longer in Australia's harshest environments. We offer peace of mind and reliability with industry leading warranty.



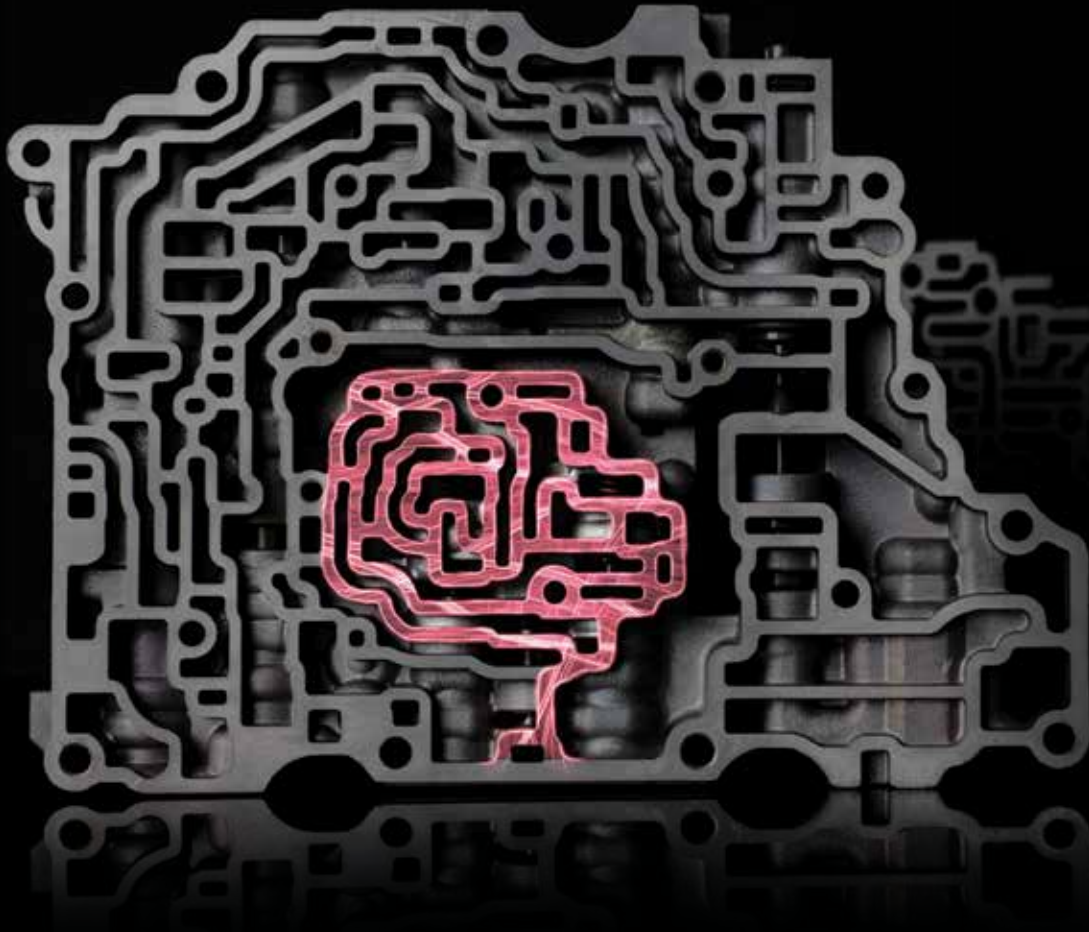
Magna Power has an extensive range of batteries for Case IH machinery. Offering a wide range of batteries for passenger vehicles, SUV/4WD/light commercial vehicles, heavy-duty trucks, motorcycles and marine batteries.

**Contact your Case IH Dealer for the full range of batteries.**



# RETHINK

CASE IH GENUINE REMAN PARTS.



## HIGH-QUALITY, LOW COST

When it comes to maintenance and repairs, Reman parts are on average 30% cheaper than the equivalent new part. Being remanufactured to 'as-new' specifications, Reman parts outperform used or rebuilt parts, making them a high-quality, low-cost alternative to original components. With many Reman parts available as drop-in assemblies, you'll spend less time in the shed and more time in the field.

**Ask your Case IH Dealer how we're transforming the availability and affordability of major components.**





## ■ SIGNIFICANT SAVINGS

Case IH remanufactured parts are competitively priced – offering great value while ensuring peak performance.

## ■ OEM PERFORMANCE

Case IH remanufactured parts are engineered to deliver like-new performance that meets stringent Case IH performance specifications.

## ■ QUALITY

Case IH remanufactured parts are completely disassembled. All parts are thoroughly inspected and reassembled to the latest OEM specifications.

## ■ LESS DOWNTIME WITH INSTALLATION OPTIONS

Because many Case IH remanufactured parts are ready to install, service technicians spend less time completing repairs or shop installs. The result? Quicker turnaround and a whole new level of equipment uptime for you.

### ENGINES

Long block  
Short block  
Replacement engine

### ROTATING ELECTRICAL

Alternator  
Starter motor

### ENGINE COMPONENTS

Cylinder head  
Crankshaft  
Camshaft  
Crankcase  
Connecting rod  
Water pump  
Oil cooler

### FUEL

Fuel injection pump  
Fuel injector

### ELECTRONICS

ECU  
Joystick  
Monitor

### HYDRAULICS

Hydraulic pump  
Hydraulic cylinder  
Hydraulic motor

### DRIVELINE

Axle  
Clutches  
Final drive  
Gearbox  
Transmission  
Torque converter

### AC COMPRESSOR

### TURBOCHARGER

### BLOWER MOTOR

### ROLLER WHEEL



# REMANUFACTURED PARTS FOR YOUR STEIGER TRACTOR

Great quality, exceptional value. Case IH Reman is the smart way to keep your machinery  
**AS GOOD AS NEW.**



### CABLE TIES

Available in assorted colours and sizes to suit a variety of applications.



TDCTP26

### HOSE CLAMPS

Since 1976, Tridon has been at the forefront of hose clamp technology. With a comprehensive range and proven quality and reliability, Tridon clamps are second-to-none.



TDCVP82SS

**Full Tridon range is available at your Case IH Dealer.**

## TRIDON TOOLS - WE'VE GOT IT COVERED

For all your agricultural requirements.



Rennsteig quality tools are manufactured in Germany. Range includes chisels, wrecking bars, punches, merchandisers and sets.



TRRCP11



KNIPEX pliers are renowned as the best and are made in Germany to the highest possible standards, with over a thousand separate styles and sizes.



TK001955S4



Toledo is an industry-leading brand recognised for high performance, reliability and value for money. Toledo is a registered Tridon brand.



TL307233





## WIPER BLADES

Tridon offers a full range of premium quality wiper products for an extensive range of passenger and commercial vehicles.

Full Tridon range is available at your Case IH Dealer.



**TRIDON** ▶

# TRIDON TOOLS - WE'VE GOT IT COVERED

Premium quality. Extensive range.



**MATSON**

Trusted by professional users, Matson battery products are recognised for their high quality, extensive range and innovative product development.



RA3800

**METRINCH**

Metrinch means fewer tools and easier selection as each tool can be used for both metric and imperial sizes.



MET-0650

**sp Sykes-Pickavant®**

Since 1921, Sykes-Pickavant has been manufacturing and distributing premium quality service tools with numerous applications in various fields.



TS180700

# GENUINE FILTERS:

## Engine oil filters



### FAST FACTS

#### Protecting today's high-horsepower engines

Case IH engine oil filters:

- are 70% more efficient in filtering critical contaminants using our MicroLoc™ synthetic media compared to paper-based media
- allow filtered oil to reach the engine more quickly with improved cold flow
- deliver high soot tolerance and dirt-holding capacity for greater filter life.

For best performance, always use with genuine Case IH engineered engine oil.

### THE 30-60-90 HORSEPOWER RULE

Off-road equipment generates more usable horsepower – 30% more than on-road trucks and 60% more than automotive engines. Tighter tolerances and higher temperatures than ever before result in severe duty cycles. Therefore, off-road engines require high quality filtration and increased durability.



**30%**  
HORSEPOWER  
USAGE



**60%**  
HORSEPOWER  
USAGE



**90%**  
HORSEPOWER  
USAGE

## Hydraulic fluid filters



### FAST FACTS

#### Did you know?

Hydraulic pumps are sensitive to contaminants as small as 10 microns – that's 10x smaller than a grain of table salt. Without proper filtration, equipment can experience:

- slips
- rough shifts
- brake system chatter
- critical failure of internal components, such as excessive gear wear.

**A vast majority of hydraulic component failures are caused by dirt particles. Up to 70% of these failures can be prevented with proper filtration.**

Only Case IH hydraulic filters have up to a 99.9% efficiency at a lower micron rating compared to the competitor.

For best performance, always use genuine Case IH engineered hydraulic transmission fluid when recommended by the operator's manual.

### CASE IH ADVANTAGE

FILTER	CAPACITY (G)	CASE IH GENUINE PARTS ADVANTAGE	AVG. PRESSURE AT FAILURE (PSID)	CASE IH GENUINE PARTS MIN. SPEC (PSID)	CASE IH GENUINE PARTS ADVANTAGE
Competitor	130	<b>48% greater capacity</b>	189	200	<b>26% stronger</b>
Case IH Genuine Parts	193		239		

Results from a field test of Case IH filter (84226263) versus competitive filter (ISO 16889).



# GENUINE FILTERS:

## Fuel filters



### FAST FACTS

#### Did you know?

As fuel travels through a typical fuel system, it picks up dirt and water. A typical litre of fuel can contain over five million contaminants.

#### Few things impact equipment productivity faster than a low-quality fuel filter.

Extremely high injection pressures and tight tolerances of today's low-emissions engines make them highly sensitive to even the smallest amount of water or contaminants. With pressures as high as 30,000 psi, contaminants act as an abrasive jet, capable of eroding fuel pump and injector surfaces.

### CASE IH ADVANTAGE

Today's Tier Four certified engines require fuel to be 100x cleaner than engines built just a few years ago.

Case IH fuel filters feature advanced design and go through extensive testing to optimise equipment protection and performance.

- MicroLoc™ synthetic media delivers high-efficiency filtration that removes up to 99.7% of contaminants.
- 2x more dirt holding capacity extends the service life of your equipment.
- Offers better injector and fuel pump protection by eliminating more contaminants than competitor filters.
- Patented self-venting drain valve on fuel/water separators dramatically improves removal of free and emulsified water.

*As fuel travels through the typical supply chain, it picks up dirt and water that is harmful – or even deadly – to your engine.*



## Engine air filters

### FAST FACTS

#### Did you know?

A typical diesel engine requires more than 8,000 gallons of clean air for every gallon of fuel it burns. The better an engine can breathe, the better it can work.

#### Case IH works diligently to specify particular filter requirements.

- Filter media, materials, seals and design features are engineered specifically for the machine to which they are fitted.
- As an example, one of Case IH's flagship platforms has 42 different air cleaner filter specifications associated with design and performance.
- Will-fit filters do not integrate with whole machine performance system design.
- Initial savings with a will-fit filter may end up costing your customers much more when repairs are needed.



### CASE IH ADVANTAGE

#### It only takes a few grams of dirt to dust an engine

Compare how much dust can pass through an air filter during 500 hours of operation.



**CASE IH MICROLOC™ FILTERS**

MicroLoc filter media  
99.99% efficiency



**CASE IH STANDARD FILTERS**

Standard filter media  
99.9% efficiency



**AFTERMARKET FILTERS**

Standard filter media  
99% efficiency

# audioXtra



5 Watt IP67 waterproof hybrid UHF-LMR radio  
**AXG18**

5 Watt waterproof UHF-CB radio  
**AXUH750**



7" LED monitor and camera kit  
**AXJS7000K**



7" Heavy duty wireless reversing camera kit  
**AXJS071WK**



Smart signal repeater

**AXGO T +ANT**

## IMPROVE YOUR MOBILE COVERAGE ON THE MOVE

CEL-FI GO is a 3G/4G mobile signal amplifier that provides up to 70dB of signal gain - 30x more powerful than a standard antenna/cradle set-up. All the while unconditionally protecting the mobile network.

Rugged UHF CB 80 channel mini compact + 3dB antenna

**AXMACHINERYPACK**

Heavy duty mic, USB charging port, slide mount cradle, 20W x 25H x 110D mm, 19 programable RX channels (requires programming lead), 3dB flexi-dipole antenna whip



# AUDIOXTRA RANGE

Performance, efficiency and selection.



3" LCD Mechless with camera input short chassis (96mm)  
**AXAX1805BT**



Mechless ALL-TERRAIN 1-DIN source unit with Bluetooth short chassis (96mm)  
**AXAT1900BT**



DVD/CD 1-DIN source unit with Bluetooth  
**AXBARCELONA240**



Full HD dash cam  
**AXZOOM**

Full HD dash cam with GPS  
**AXZOOM+**



Part Number	Description
NA71740	ULTIMA 215 LED driving light - 215mm OD
NA72772	LED driving light bar - spot beam
NA94210	LED rear combination lamp
HAHM1590WB	Compact LED work lamp
HA2053	DuraLED indicator lamp
HAHM9600ADIR	DuraRAY3 LED rotating beacon
B5121T	LED work light - trapezoid beam oval - 750 lumen output
BDL367LED	LED driving light - combo beam
BF700-00	LED microbar 30W amber lens 12-24V



# LIGHTING

Performance, efficiency and a wide selection

Case IH offers a wide range of lighting solutions for all your farming machinery including utes, 4WDs and trucks.

FOR ALL YOUR LIGHTING NEEDS, CONTACT YOUR CASE IH DEALER.

**NARVA®**



## UHF CB RADIO

- Affordable and compact 80 channel
- 5 watt UHF CB radio
- Digital signal processing technology 3 - ideally suited to harsh operating environments
- ScanSuite for uninterrupted conversation even on congested channels
- 5-year warranty



TX3500S

## UHF CB RADIO

- 80 channel feature packed with 5 watt UHF CB radio
- Digital signal processing technology
- Large LCD screen
- Channel controls also in microphone
- DIN size with mounting kit supplied
- ScanSuite for uninterrupted conversation even on congested channels
- 5-year warranty



TX4500S

## UHF CB RADIO

- Australian made radio platform designed to be smart, adaptable and rugged.
- Enabled by Bluetooth smart technology, XRS is the first of a new generation of connected UHF CB radios with unique features.
- It is the first ever UHF CB radio with app control and introduces new features such as creating and sharing scan lists and instant access to the entire Australian and New Zealand registered analogue frequency database.



XRS-370C

# RADIOS AND ANTENNAS

Get clear communication in the field.

## UHF FLEXIBLE ANTENNA

- Highly flexible, ferrule and mounting nut for easy installation
- Ground independent
- Length 370 mm
- 2.1 dBi
- Suitable for agricultural vehicles where the installation is high off the ground



AE4005

## 477 MHZ ANTENNA

- AE4018 whip with high quality elevated feed and electro polished stainless steel barrel spring, 4.5 m low loss coaxial cable
- Ground independent
- Length 980 mm
- 6.6 dBi
- Supplied with: 4.5 m low loss oam coaxial cable and PL259 database



AE4018K1





# FIRE EXTINGUISHERS

Legally compliant with Australian standards.



Part Number	Description
CH2040/17	Fire extinguisher 1.0kg ABE dry chemical 1A:10B:E
CH2062/17	Fire extinguisher 1.5kg ABE dry chemical 2A:30B:E
CH2055/17	Fire extinguisher 2.3kg ABE dry chemical 2A:40B:E
CH2058/17	Fire extinguisher 4.35kg ABE dry chemical 4A:60B:E
CH2060/17	Fire extinguisher 9.0kg ABE dry chemical 6A:80B:E
CH1013/17	Fire extinguisher 9.0lt 3A water
CH1014/17	Fire extinguisher 9.0lt foam 3A:20B
CH70074	Fire extinguisher vehicle bracket HD suits 2.5kg to 4.5kg
CH70076	Fire extinguisher vehicle bracket HD suits 9.0kg

# FRIDGES

The ultimate powered cooler.

Heavy-duty, yet lightweight, ExoFrame construction with fender frame protected edges, and aluminium alloy handles.

## BENEFITS OF CFX3

- Powerful VMSO<sup>3</sup> compressor cooling technology efficiently refrigerates and deep-freezes to -22°C.
- Easy-to-read high-resolution colour display and soft touch buttons enabling seamless control and monitoring of fridge/freezer performance.
- CFX3 app allows temperature control via Bluetooth or Wifi and provides performance history.
- 3-stage battery protection system prevents dead car battery or allows deep draw on dual batteries.
- Gasket technology provides a superior seal to retain cool air and minimise power consumption.

**DOMETIC**  
Mobile living made easy.



Part Number	Description	Capacity (Litres)	Weight (kg)	Dimensions (W x H x D) mm
CFX335	Compressor fridge or freezer	36	16.9 kg	398 x 407 x 694
CFX345	Compressor fridge or freezer	46	18.7 kg	398 x 476 x 694
CFX355	Compressor fridge or freezer	55	20.4 kg	720 x 480 x 455
CFX355IM	Compressor fridge or freezer, ice maker	53	21.3 kg	720 x 480 x 455
CFX375DZ	Compressor fridge or freezer	75	27.8 kg	892 x 472 x 495
CFX395DZ	Compressor fridge or freezer	94	29.8 kg	962 x 472 x 530



# TOY RANGE

Fun for all the kids.



44154



NEW

44211



NEW

NEW

44231

44212

A44099

Part Number	Description	Scale
44154	Case IH 380 Magnum (update)	1:16
44211 <b>NEW</b>	Case IH Magnum 400 introduction prestige with 'chase' tractor	1:32
44212 <b>NEW</b>	Case IH Magnum 400 introduction prestige with 'chase' tractor	1:16
44231 <b>NEW</b>	Steiger 540 & 580 Quadtrac assortment	1:16
A44099	Steiger Bearcat II (Fargo 50th anniversary)	1:16

The Case IH toy range includes ride-ons, scale toys and collectables.

For the full range of toys, contact your local Case IH Dealer.







47154

## YOU'RE NEVER TOO YOUNG TO OWN A CASE IH



14960



46621



44173



14998



14940



44194



44105



44154



44154



44075



44106



44132





Part Number	Description	Scale
<b>47154 NEW</b>	Big Farm Case IH Magnum 380CVT tractor with front loader	1:16
<b>A46621</b>	Case IH 380CVT Magnum tractor	1:16
<b>44173 NEW</b>	32 Case IH Magnum 380 RowTrac	1:32
<b>44194 NEW</b>	32 Updated Magnum wheeled tractor	1:32
<b>A44202</b>	Case IH Magnum 380 prestige tracked tractor 2019 farm show	1:32
<b>14940</b>	Case IH Magnum 340 RowTrac	1:32
<b>A14960</b>	32 Case IH Magnum 340 tractor	1:32
<b>14990</b>	32 Case IH 330 turbo tillage	1:32
<b>A14998</b>	32 Case IH Steiger 580 tractor	1:32
<b>44075</b>	32 Case IH Optum 300 tractor	1:32
<b>A44105</b>	32 Case IH Steiger 620 4WD 60th anniversary	1:32
<b>44106</b>	32 Case IH Steiger 540 wheeled	1:32
<b>A44132</b>	32 Case IH Steiger with grouser blade	1:32
<b>47000</b>	20cm Case IH 305 with applicator & ammonia tank	20cm
<b>46016</b>	20cm MT 4WD Steiger shake n sound tractor	20cm
<b>441720TP</b>	Case IH Magnum 380 early farm show with chase tractor	1:64

Part Number	Description	Scale
<b>44201</b>	Case IH Magnum 380 2019 Fall Farm Show	1:64
<b>14702</b>	64 Steiger PINK panther Series III tractor	1:64
<b>14850</b>	64 Case IH 330 turbo disk	1:64
<b>A14907</b>	64 Steiger 580 with grouser blade	1:64
<b>14908</b>	64 Case IH 620 Steiger Quadtrac	1:64
<b>14917</b>	64 Case IH 380 Magnum wheeled	1:64
<b>A14936</b>	64 Case IH Magnum 380 RowTrac	1:64
<b>14944</b>	64 IH 4586 4 wd tractor	1:64
<b>A14967</b>	64 Steiger turbo tiger I series I	1:64
<b>44082</b>	64 Case IH semi w/Steiger 520 tractor w/singles	1:64
<b>44114</b>	64 Case IH Magnum with updated cab	1:64
<b>44163</b>	64 Steiger Bearcat II	1:64
<b>46502</b>	CNP - 64 Case IH modern die cast tractor	1:64
<b>46704</b>	CNP - 4.3 Case IH 4WD tractor	1:64
<b>A44150</b>	64 Case International 9380/9370 4WD assortment	1:64
<b>A44202</b>	Case IH Magnum 380 prestige tracked tractor 2019 Farm Show	1:64





Kingston jacket  
**CAKINGJKT**



Reyes jacket  
**CAREYESJKT**



Ladies black ice polo  
**CABICELPOLO**



Verve polo black  
**CAVERVBLK**



Mens red tee  
**CARTSHIRT**



Harvester t-shirt  
**CAHARVTEE**



Ladies grey t-shirt  
**CALGRETEE**



Ladies pale pink cotton polo  
**CACOTPPOLO**



**CASE IH MERCHANDISE,  
WEAR IT LOUD AND PROUD!**





Hi-Vis reversible vest  
**CAHVRVEST**



Red backpack  
**CAREDBPACK**



Odyssey black notebook  
**CAODNBOOK**



Red trim beanie  
**CARTBEAN**



Flat pack stubby holder  
**CAFLSTUB**



Basic trucker cap  
**CABASTRU**



Leo cap  
**CALEOCAP**



Canvas stubby holder  
**CACANSTU**



Harvest backpack  
**CAHARVBP**



Tasman black duffle bag  
**CATASBAG**



Altair cap  
**CAALTCAP**



Field trucker flat peak cap  
**CAFTCAP**



Hot/cold vacuum bottle  
**CAMETBOT1**



Snappy bottle opener keyring - black  
**CASNAPKEY**



Chevron bottle opener  
**CACHEVBOT**

Case IH offer a wide range of merchandise.

For the full range, contact your Case IH Dealer today.



**caseih.com**

31-53 Kurrajong Road, St Marys NSW, 2760, Australia

Case IH reserves the right to make improvements in design and changes in specifications at any time without notice and without incurring any obligation to install them on units previously sold. The specifications, descriptions and illustrative material contained herein are as accurate as known at time of publication, but are subject to change without notice. Illustrations may include optional equipment and accessories and may not include all standard equipment.

**CASE IH**  
AGRICULTURE